

## Combi Ergopack®: The Ergonomic Solution to Hand Packing

The innovative Combi Ergopack® has raised the standard for hand packing productivity. Efficient and durable, the Ergopack® combines a case erector, a hand pack station and a case sealer into a compact and cost-effective work cell. This ergonomically designed machine features a hands-free indexing system that positions cases and product for optimal operator comfort, minimizing repetitive wrist and arm motions. Variable speed product infeed and on-demand case presentation combined with available one, two or three operator pack stations provide ultimate flexibility. This system, first in the industry, features the built-in strength, ease of maintenance and customer support you can expect from all Combi equipment.

### ERGOPACK® BENEFITS

- Ergonomically designed, hands free case indexing system reduces reach and wrist movements
- Lifting of products significantly reduced, resulting in fewer back injuries and discomfort
- Reduces costly physical stressors associated with manual case erecting, hand packing and case sealing
- Ideal for short runs - quick case changeovers
- Increase profits through increased productivity
- ROI under 6 months, in most cases
- Customized to your application including stainless steel, washdown components
- EZ load, walk-in 50" powered case magazine requires no overhead lifting



## CHARACTERISTICS:

- Hands free, on-demand or continuous case indexing system
- Heavy duty welded tubular framework
- 3M™ Accuglide™ tape heads
- Easy to access external mounted vacuum filter
- Vacuum blowoff prevents corrugated dust build-up
- Right hand or left hand execution
- Lockout/tagout safety disconnect
- Product conveyor with variable frequency speed control
- One year warranty on non-wear parts

## ELECTRICAL SERVICE:

- 240 volts / 3 ph / 10 amps

## AIR REQUIREMENTS:

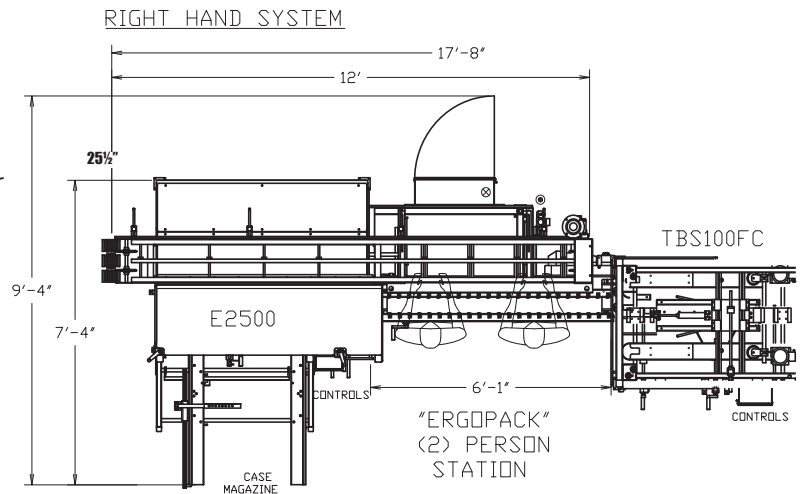
- 80 psi clean air supply. Consumes approx 5 CFM @ 12 cpm

## PRODUCT INFEEED HEIGHT:

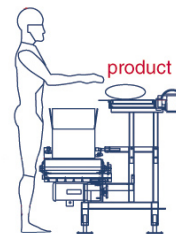
- Case discharge height + Height of tallest box + Top flap height

## STANDARD CASE DISCHARGE ELEVATION:

- 21" to 28" (case dependent)



Side view



The ergonomic Combi Ergopack® is unique in the industry and the perfect solution for hand packing the widest range of products. Ideal for food products that require inspection before packing; packing products of variable sizes where total automation is impractical; or applications where you need more than a stand-alone case erector but less than total automation.

## SPECIFICATIONS(MM)

Model	Case Size Min* (LxWxH)	Case Size Max (LxWxH)	Speed: Cases Per Minute	Overall System Footprint Two Person Station*
E-2500	8½ x 5 x 5" (216x127x127mm)	20 x 13½ x 16" (508x343x406mm)	12	17'7" x 7'1" (536 x 216 cm)
E-3000	13 x 7¾ x 6" (330x197x152mm)	24 x 16 x 16" (610x406x406mm)	10	20'2" x 7'9" (615 x 236 cm)
2-EZ® XL	13 x 10 x 6" (330x254x152mm)	24 x 20 x 18" (610x508x457mm)	10	21'10" x 8'8" (665 x 264 cm)

\* Speeds are operator and case size dependent. Higher speeds are achievable with optional servo carriage or robot.