

Combi TBS Sanitary: Top and Bottom Case Sealers Sanitary Design

In today's highly regulated world, food and pharmaceutical producers and processors must ensure their processing equipment meets the highest levels of hygiene and safety. While there are currently no formal government agencies regulating packaging machinery, food manufacturers are taking an active role in assigning the highest priority to the safety and purity of their food through the entire manufacturing process. Combi recognizes the role their equipment plays in these plants and has designed a line of sanitary semiautomatic and automatic case sealers that reduce and eliminate potential lodgment areas where undesirable microorganisms might gather. Working with a task force of engineers and quality managers, Combi's sanitary case sealers were designed to meet the following attributes:

- **Cleanable** - Constructed to ensure that the equipment can be effectively and efficiently cleaned and sanitized over the lifetime of the equipment.
- **Open Design Construction** - Stainless steel materials are corrosion resistant and compatible with cleaning and sanitizing chemicals
- **Accessible** - Parts of the case sealers are readily accessible and disassembled for inspection and cleaning without the use of tools.
- **Water Shedding Surfaces** - Equipment is self-draining to assure that product, water or liquids do not accumulate or pool on the equipment surfaces.
- **No Hollow Areas** - Hollow areas and penetrating rivets or fasteners are eliminated
- **No Niches** - Equipment is free of niches and all welds are continuous and fully penetrating
- **Hygienic Maintenance Enclosures** - Control panels are sloped or pitched and easily cleaned and sanitized



TBS-100SA Semi-Automatic
Sanitary Top & Bottom Case Sealer w/Leg Extensions



TBS-100FC Automatic
Sanitary Top & Bottom Case Sealer

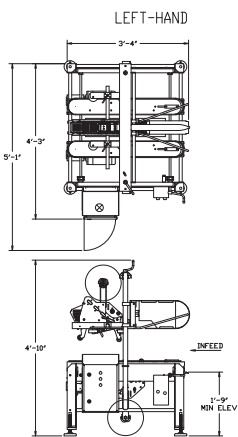
FEATURES & SPECIFICATIONS:

- Heavy duty construction with US stainless steel
- Lifetime warranty on structural framework
- Right hand or left hand execution
- Quick changeovers between case sizes
- Nema 4x electrical package with fan cooled SSTL motors and SSTL gearboxes
- Available in top or bottom only models
- 3M Accuglide™ II+ tapeheads
- Side drive belt system including tool-less belt removal
- Small, compact footprint aids mobility
- In stock replacement parts ship within 24 hours
- One year warranty on non-wear parts

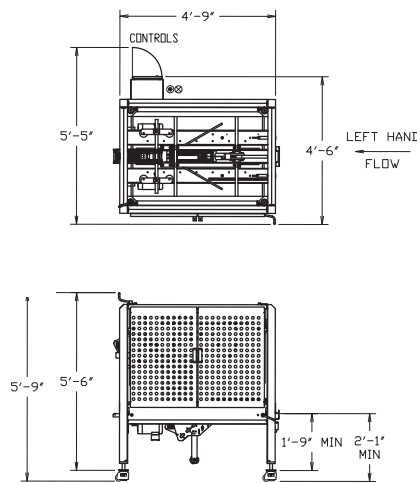
ELECTRICAL SERVICE*:

- 115 Volt / Single Phase / 15 amps
- * Other voltages available upon request

Semi-Automatic



Fully-Automatic



Parts of the case sealers are readily accessible and disassembled for inspection and cleaning without the use of tools. Tool-less removal of the tapehead and tapehead support plate are illustrated.

SPECIFICATIONS(MM)

Model	Operation	Case Size Min* (LxWxH)	Case Size Max (LxWxH)	Speed: Cases Per Minute
TBS-100 SA RTE	Semi-automatic	5 x 5 x 5" (127x127x127mm)	n/a x 20 x 20" (n/ax508x508mm)	80 fpm or ~20 cpm
TBS-100 FC FCXL	Automatic	5 x 5 x 5" (127x127x127mm)	20 x 16 x 20" (508x406x508mm)	60 fpm or 20 cpm
TBS-100 FC FCXL Random	Automatic	5 x 5 x 5" (127x127x127mm)	24 x 20 x 20" (610x508x508mm)	80 fpm or 20 cpm

*Max speeds are case size dependent