

Improve efficiency and lower operating costs



Servo Motion-Control Technology – Omni S

- **Fast** – High packaging speeds
- **Programmable** – Adjustable end-seal pressure, film bunching for tall products, automatic positioning for end-seal opening, end-seal centerline, side-seal conveyor positioning and side-seal centerline



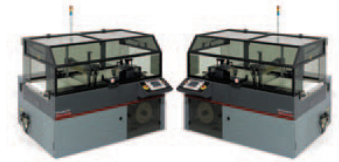
Versatile Sealing System

- **Large capacity** – The wide and high end-seal opening allows plenty of room to package large, tall products
- **Selection** – Choose either EZ Open dual wire or hot knife side-seal assembly, and SmartWire® or hot knife end-seal assembly



Plug-and-Play Infeed Modules

- **Quick** – Infeed changeovers in less than 10 minutes
- **Value** – New infeeds may be purchased separately as needed, giving you long-term flexibility, value and investment protection
- **Efficient** – Simply choose the infeed module that maximizes your production efficiency



Available in Right- or Left-Hand Configurations

- **Versatile** – Available right-to-left or left-to-right production flow configurations facilitate ease of line integration
- **Labor savings** – Allows one operator to control two machines simultaneously, maximizing labor resources



Omni Wrapper Standard Features	G	S
23" Wide End Seal	X	X
8" High End-Seal Opening	X	
10" High End-Seal Opening		X
Dual End-Seal Eyes	X	X
EZ Open Dual Wire or Hot Knife Side Seal	X	X
Modular Infeed Connection Ports	X	X
Automatic System Configuration	X	X
Enable/Disable Infeed Capability	X	
Left-to-Right Product Flow Configuration	X	X
Light Stack Status Indicator	X	X
Quick Release Conveyor Belt Rollers	X	X
Casters	X	X
Graphics-Based Color Touch Screen	X	X
100-Package Recipe Storage Capacity	X	X
Quick Set-Up Recipe Calculator	X	X
Multilingual Operator Interface	X	X
Metric Fasteners	X	X
Swing-Out Electrical Control Cabinet	X	X
Integrated Recessed Selvage Winder with Dancer-Controlled Variable Speed Drive	X	X
Selvage Full Alarm/Blue Indicator Light	X	X
Selvage Break Alarm/Machine Stop	X	X
Automatic Scrap Film Threading (Air assist on start-up only)	X	X
Programmable "Film Bunching" for Tall Products		X
Dual-Axis Servo End Seal		X
Programmable End-Seal Pressure		X
Automatic Positioning for End-Seal Opening and Centerline		X
Automatic Positioning for Side-Seal Conveyor and Centerline		X
Infeed Module Standard Features	G	S
30" Wide, Dancer-Controlled Variable Speed Film Unwind	X	X
Pin Perforator System with Back-Up Brush	X	X
Adjustable Film Inverter	X	X
Separate Infeed Drive Motor	X	X
Modular Infeed Connectors	X	X
Casters	X	X
Right-to-Left Product Flow Configuration	X	X
Left-to-Right Product Flow Configuration	X	X

Maintenance-Friendly Design

- **Easy access** – Light-weight, easy-open seal-area cover, three front-hinged access panels (wrapper, selvage, and infeed) and a rear swing-out electrical control cabinet
- **Easy maintenance** – Quick release conveyor belt rollers, and fault identification and history



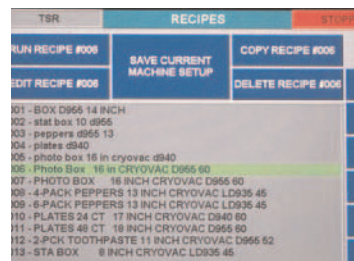
Operator-Friendly Design

- **Effortless** – Touch screen provides easy system setup and operation
- **Multilingual** – Operator interface features English, Spanish and French
- **Smart** – Enter new package dimensions and the recipe calculator will assist with setup
- **Self-diagnostic** – Viewable fault log tracks system errors
- **Secure** – Multilevel security access



Wrapper and Package Set-Up Storage Capability

Repeatable – Store up to 100 recipes for quick, repeatable changeovers at the touch of a button

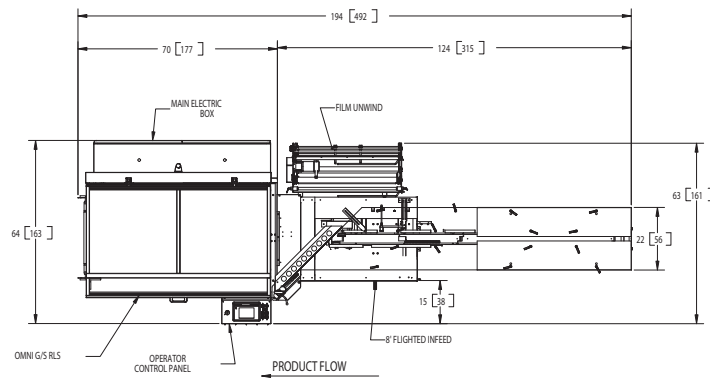


Intelligent Control Network

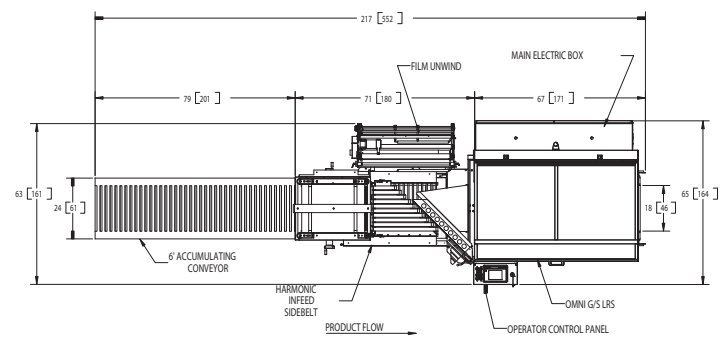
Intelligent – Automatically identifies attached infeed module and accessories, and configures system accordingly



Omni RL with Flighted Infeed

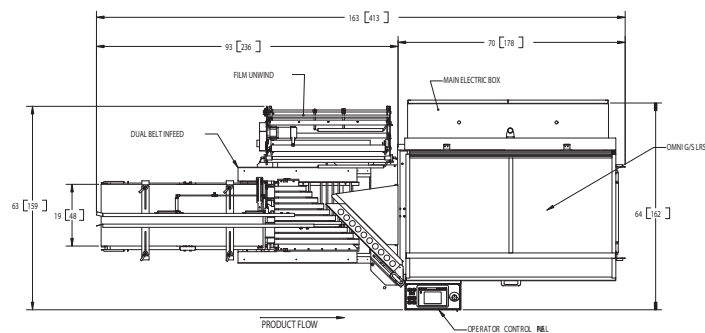


Omni LR with Harmonic Infeed

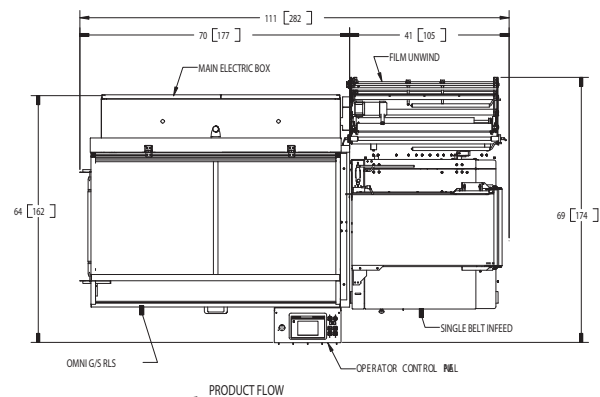


shown with optional accumulation conveyor

Omni LR with Dual-Belt Infeed



Omni RL with Single-Belt Infeed



	Omni G LR & Omni G RL	Omni S LR & Omni S RL
Package Size	Min: 1/2" W x 1/16" H x 3" L Max*: 19" W x 8" H x Infinite L *Width and height combination cannot exceed maximum film width	Min: 1/2" W x 1/16" H x 3" L Max*: 19" W x 10" H x Infinite L *Width and height combination cannot exceed maximum film width
Max Film Width (Folded)	30 inches	30 inches
Max Film Width (Flat)	60 inches (with optional centerfolder)	60 inches (with optional centerfolder)
Conveyor Height	35 1/2 – 42 inches	35 1/2 – 42 inches
Package Speeds	Maximum 80 PPM Dependent on product and application	Maximum 100 PPM Dependent on product and application
Film Speeds	120 ft/min	120 ft/min
Longitudinal Seal	Dual Wire or Hot Knife	Dual Wire or Hot Knife
Transverse Seal	Hot Wire or Hot Knife	Hot Wire or Hot Knife
Drives	Conveyor/Side Seal 1/2 HP AC End-Seal Carriage 3/4 HP AC	Conveyor/Side Seal 1/2 HP AC End-Seal Carriage Servo End-Seal Open/Close Servo
Power	3 Phase, 230 VAC, 18 Amp	3 Phase, 230 VAC, 18 Amp
Compressed Air	1/2 CFM @ 65 PSIG	1/2 CFM @ 65 PSIG only required during initial selvage threading – not used during normal run mode
Safety Devices	<ul style="list-style-type: none"> • Emergency stop button to instantly stop machine motion • Seal bar safety feature to open jaws if closed on an obstacle • Low voltage sensors and controls • Multiple safety interlocks • Torque limits on drives • Tamper-resistant controls and interlocks • Full coverage interlocked hood over end-seal and side-seal areas 	<ul style="list-style-type: none"> • Emergency stop button to instantly stop machine motion • Seal bar safety feature to open jaws if closed on an obstacle • Low voltage sensors and controls • Multiple safety interlocks • Torque limits on drives • Tamper-resistant controls and interlocks • Full coverage interlocked hood over end-seal and side-seal areas